

Water Reliability Study

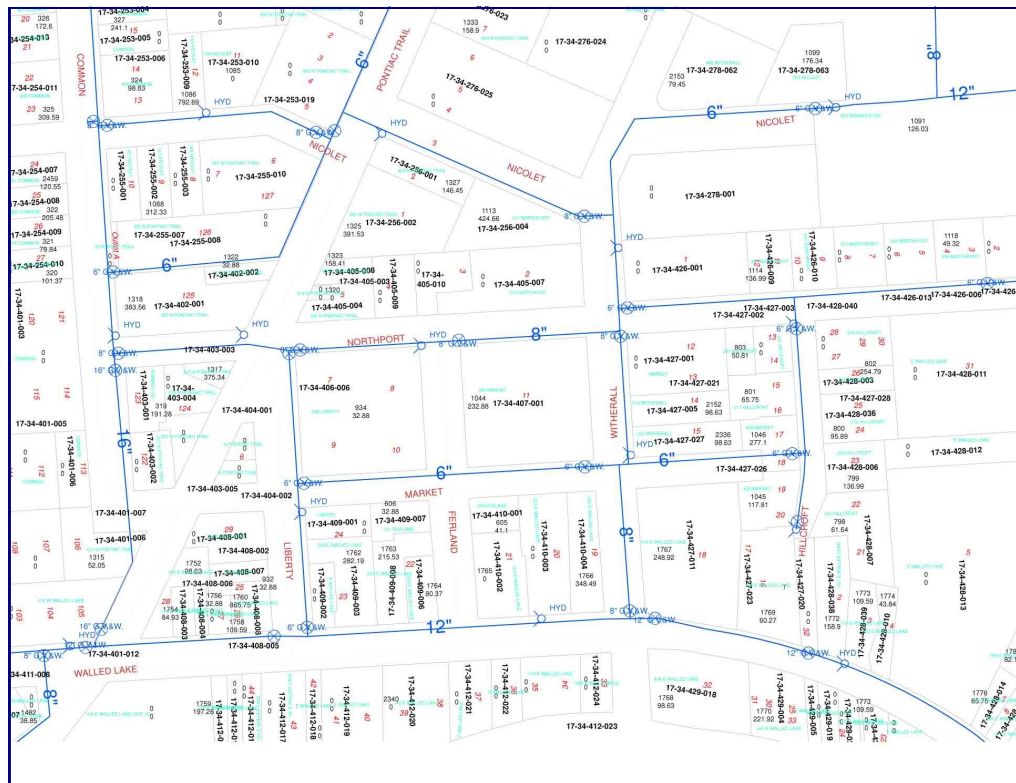
City of Walled Lake, Oakland County

PROJECT PROFILE

Client: City of Walled Lake
 1499 E. Maple Road
 Walled Lake, MI 48390
 Ms. Lisa McGill
 248.624.4847

Project Description

Boss Engineering performed an exhaustive analysis of the existing water system including hardy-cross evaluation of existing and future demand needs. This study resulted in revealing areas of low pressure and potential fire flow deficiencies that have become part of a five year plan with the MDEQ to reconstruct and replace infrastructure on a priority basis. Future growth can be accommodated with the system upgrades recommended.



3121 E. Grand River Ave., Howell, MI 48843
 ph: 517.546.4836 fax: 517.548.1670 www.bosseng.com